



OUR AWARD WINNING INDOOR CYCLES.





GET KINETIC.

ENGINEERED TO MOVE YOU BETTER.

Tomahawk® - a brand dedicated to the engineering of Indoor Cycles for the fitness market. Its product range has won best in "Indoor Cycling" category at the annual European Bodylife Awards 5 times since 2005. Engineered to move you better, Tomahawk® Indoor Cycles provide superior comfort, pedal performance and ROI.



2005

2006

2008

2009

2011

 | TOMAHAWK

HOME SERIES.

NO MORE EXCUSES.



GET KINETIC.

ENGINEERED TO MOVE YOU BETTER.

HOME FITNESS MODEL SPECIFICATIONS



PREMIUM PEDALS

Features a carbon steel axle and extra wide body to withstand extreme loads and provide maximum comfort



CHROME PLATED ADJUSTMENT SYSTEM

To resist corrosion and prolong the life of the bike



SINGLE ACTION CANTILEVER BRAKE SYSTEM

The single action cantilever brake system is user friendly and fast acting - complies with EN 957 safety regulations



UNISEX SPORTS SADDLE

The ergonomically designed Tomahawk® unisex sports saddle aims to provide the right balance of comfort and performance for all users



SUPERIOR CONTI-V-MULTIRIB® BELT DRIVE

The acclaimed Conti-V-Multirib® belt and brilliantly designed Tomahawk® adjustable drive system deliver a slip-free, smooth 360-degree pedal action under extreme torque



EYE CATCHING PAINT AND DECALS

Provided in gloss black with aluminum decals and chrome badges



ROBUST OVAL TUBING FRAME CONSTRUCTION

Designed for strength, provides a contemporary and engaging look



BELT GUARD SERVICING WINDOW

Provides quick access to the belt drive system without removing the belt guard



FLYWHEEL HUB

Spinning the wheel on 6 TPI 6001zz precision bearings for superior performance



LEFT SIDE FLYWHEEL HUB COVER

Protecting the flywheel parts against corrosion. Features servicing window for easy maintenance access



POWDER COATING

A powder coated frame that resists sweat and abrasion



CUSTOM FORGED CRMO STEEL CRANKS

Designed to manage extreme pressures beyond normal class conditions. Guaranteed to withstand bending and breakage



INTEGRATED HANDLEBAR TECHNOLOGY

Features a wired version of the "Console One" computer and embedded heart rate sensors



MICRO VERTICAL ADJUSTMENT FOR SEAT AND HANDLEBAR COLUMN

Inch increments between holes provide optimum range to suit variation in user height. Numeric markings for easy user reference



RUBBER COATED ADJUSTMENT KNOBS

Allows quick and safe adjustment even with sweaty hands



TRANSPORT WHEELS

Non marking, makes the bike easy to reposition or move from your storage space to private rooms/facilities



CENTRAL FRAME WATER BOTTLE HOLDER

The central frame position provides easy and convenient access during the workout



PIN CLAMPING SYSTEM

Provides a strong, easy to use adjustment for seat and handlebar column



CHROME PLATED FLYWHEEL

A fixed 15kg chrome plated flywheel perfectly balanced and spun on 6 TPI 6001zz precision bearings provides high performance at any velocity



OVERSIZED BOTTOM BRACKET ASSEMBLY

Strong and durable performance featuring 2 TPI 6001zz precision bearings for smooth performance

 | TOMAHAWK

THE E-SERIES.

ENGINEERING BEYOND EXPECTATION.



GET KINETIC.

ENGINEERED TO MOVE YOU BETTER.

COMMERCIAL MODEL SPECIFICATIONS



SPD COMPATIBLE PEDALS

To be used with professional cycling shoes (Shimano 51/55 cleat systems) and regular exercise footwear. Features a carbon steel axle and extra wide body to withstand extreme loads and provide maximum comfort



ALUMINUM ADJUSTMENT SYSTEM

The use of premium materials to overcome corrosion and prolong the life of the bike



SINGLE ACTION CANTILEVER BRAKE SYSTEM

The single action cantilever brake system is user friendly and fast acting - complies with EN 957 safety regulations



UNISEX SPORTS SADDLE

The ergonomically designed Tomahawk® unisex sports saddle aims to provide the right balance of comfort and performance for all users



SUPERIOR CONTI-V-MULTIRIB® BELT DRIVE

The acclaimed Conti-V-Multirib® belt and brilliantly designed Tomahawk® adjustable drive system deliver a slip-free, smooth 360-degree pedal action under extreme torque



EYE CATCHING PAINT AND DECALS

Provided in gloss black with aluminum decals and chrome badges



ROBUST OVAL TUBING FRAME CONSTRUCTION

Designed for strength, provides a contemporary and engaging look



BELT GUARD SERVICING WINDOW

Provides quick access to the belt drive system without removing the belt guard



FLYWHEEL HUB

Spinning the wheel on 6 TPI 6001zz precision bearings for superior performance



LEFT SIDE FLYWHEEL HUB COVER

Protecting the flywheel parts against corrosion. Features servicing window for easy maintenance access



DUAL HANDLEBAR BOTTLE HOLDER

The dual bottle holder is centrally placed at the top of the handlebar for convenient access and shaped to avoid obstructing hand placement in the 'Time-Trial' position



RUST RESILIENT "ED" AND POWDER COATING

Unique frame protection process creating a durable frame that overcomes sweat and abrasion



CUSTOM FORGED CRMO STEEL CRANKS

Designed to manage extreme pressures beyond normal class conditions. Guaranteed to withstand bending and breakage



NON-SLIP VERSATILE HANDLEBAR

The Tomahawk® handlebar provides the markets most diverse range of hand positions to help coach a wide range of cycling styles



MICRO VERTICAL ADJUSTMENT FOR SEAT AND HANDLEBAR COLUMN

1/2 inch increments between holes provide optimum range to suit variation in user height. Numeric markings for easy user reference



RUBBER COATED ADJUSTMENT KNOBS

Allows quick and safe adjustment even with sweaty hands



TRANSPORT WHEELS

Non marking, makes the bike easy to reposition or move from your storage space to studio



CENTRAL FRAME WATER BOTTLE HOLDER

The central frame position provides easy and convenient access during the workout



UNIQUE DIAGONAL PIN INSERTION

Provides maximum stability for seat and handlebar column



CHROME PLATED FLYWHEEL

A fixed 15kg chrome plated flywheel perfectly balanced and spun on 6 TPI 6001zz precision bearings provides high performance at any velocity



OVERSIZED BOTTOM BRACKET ASSEMBLY

Strong and durable performance featuring 2 TPI 6001zz precision bearings for smooth performance

 | TOMAHAWK

THE S-SERIES.

PERFORMANCE WITHOUT COMPROMISE.



GET KINETIC.

ENGINEERED TO MOVE YOU BETTER.

COMMERCIAL PREMIUM MODEL SPECIFICATIONS



L X 7 "DROP" HANDLEBAR

The market's first "Drop" bars to meet the needs of the professional and beginner alike. Additional fore and aft micro adjustments provide fine tuning for the perfect set-up.



FEATURING "CONSOLE-ONE" AS STANDARD

Monitor and record your class performance, then the following week beat it. The Tomahawk® Console-One provides a real-time display of rpm, distance, Polar® heart rate, calories burned and time (There is no record feature built into the console)



RAPID STOP CANTILEVER BRAKE SYSTEM

The unique cantilever "pull up" operation provides unrivalled stopping speed with minimum effort. Complies with EN 957 safety regulations



DUAL "DESCENT" BOTTLE HOLDER

Positioned right and left of the frame, the dual water bottle holder is right beside the "drop" of the handlebar for easy and convenient access during the workout.



PREMIUM ALUMINUM ADJUSTMENT SYSTEM

The use of premium materials to overcome corrosion and prolong the life of the bike.



SPD COMPATIBLE PEDALS

To be used with professional cycling shoes (Shimano 51/55 cleat systems) and regular exercise footwear. Features a carbon steel axle and extra wide body to withstand extreme loads and provide maximum comfort.



EYE CATCHING PAINT AND SUPERIOR DECALS

Provided in high gloss platinum with superior carbon effect plastics, aluminum decals and chrome badges.



SUPERIOR CONTI-V-MULTIRIB® BELT DRIVE

The acclaimed Conti-V-Multirib® belt and brilliantly designed Tomahawk® adjustable drive system deliver a slip-free, smooth 360-degree pedal action under extreme torque.



ROBUST OVAL TUBING FRAME CONSTRUCTION

Designed for strength whilst providing a contemporary and engaging look. Features an integrated sweat shield to protect flywheel.



DIAGONAL PIN INSERTION

Provides maximum stability for seat and handlebar column.



FLYWHEEL HUB

Spinning the wheel on 6 TPI 6001zz precision bearings for superior performance.



LEFT SIDE FLYWHEEL HUB COVER

Protecting the flywheel parts against corrosion. Features servicing window for easy maintenance access.



SUPERIOR FORE AND AFT SADDLE AND HANDLEBAR SLIDERS

Provides smooth and precise adjustment and advanced comfort for users.



ANTI-SCRATCH PROTECTION PLATES

Protection against scratches and marks to prolong the aesthetics of your bike (Placed on front and rear stabilizers, rear lateral frame and above the bottom bracket)



UNISEX SPORTS SADDLE

The ergonomically designed Tomahawk® unisex sports saddle aims to provide the right balance of comfort and performance for all users.



OVERSIZED BOTTOM BRACKET ASSEMBLY

Strong and durable performance featuring 4 TPI 6001zz precision bearings for smooth performance.



RUST RESILIENT "ED" AND DOUBLE POWDER COATING

Unique protection process and double powder coating to overcome sweat and abrasion.



CUSTOM MADE FORGED CRMO STEEL CRANK

Designed to manage extreme pressures beyond normal class conditions. Guaranteed to withstand bending and breakages.



NON-SLIP HANDLEBAR

Coated with a soft, yet durable non-slip surface.



MICRO VERTICAL ADJUSTMENT FOR SEAT AND HANDLEBAR COLUMN

Inch increments between holes provide optimum range to suit variation in user height. Numeric markings for easy user reference.



BELT GUARD SERVICING WINDOW

Provides quick access to the belt drive system without removing the belt guard.



CHROME PLATED FLYWHEEL

A fixed 15kg chrome plated flywheel perfectly balanced and spun on 6 TPI 6001zz precision bearings provides high performance at any velocity.



RUBBER COATED ADJUSTMENT KNOBS

Allows quick and safe adjustment even with sweaty hands.



INTEGRATED SWEAT SHIELD

Protecting the brake and flywheel from sweat whilst maintaining a seamless design.



TRANSPORT WHEELS

Non-marking, makes the bike easy to reposition or move from your storage space to studio.

 | TOMAHAWK

CONSOLE-ONE.

RECORDS ARE MADE TO BE BEATEN.



GET KINETIC.

ENGINEERED TO MOVE YOU BETTER.

MODEL SPECIFICATIONS



A BRIGHTER CONSOLE PROVIDING A BETTER PERFORMANCE

The computer provides a strong backlight for use in dark studios without compromising battery life. A 5-second duration per-press helps provide over 3,000 hours of use



PERSONAL BESTS WERE MADE TO BE BEATEN

Monitor and record your class performance, then the following week beat it. The Tomahawk® Console-One computer provides a real-time display of rpms, distance, Polar® compatible heart rate, calories burned and time (There is no record feature built into the console)



WIRELESS TRANSMISSION IMPROVES BIKE USAGE

The 3.5" display receives both Polar® heart rate and the flywheel data wirelessly to improve durability and allow the computer to be used in the Tomahawk® Cyclewell set-up

 | TOMAHAWK

CYCLEWELL.

ADAPT TO ADVANCE.



GET KINETIC.

ENGINEERED TO MOVE YOU BETTER.

MODEL SPECIFICATIONS



DRAMATIC RESULT, SIMPLISTIC DESIGN

The Tomahawk® Cyclewell Adaptor transforms the cycles seated position and hand placement to offer greater torso support and lay the foundation for a new class structure



READY AND STABLE. A SPECIAL POPULATION NEEDS

The Tomahawk® Cyclewell Saddle provides the superior comfort and core stability required when coaching special population groups



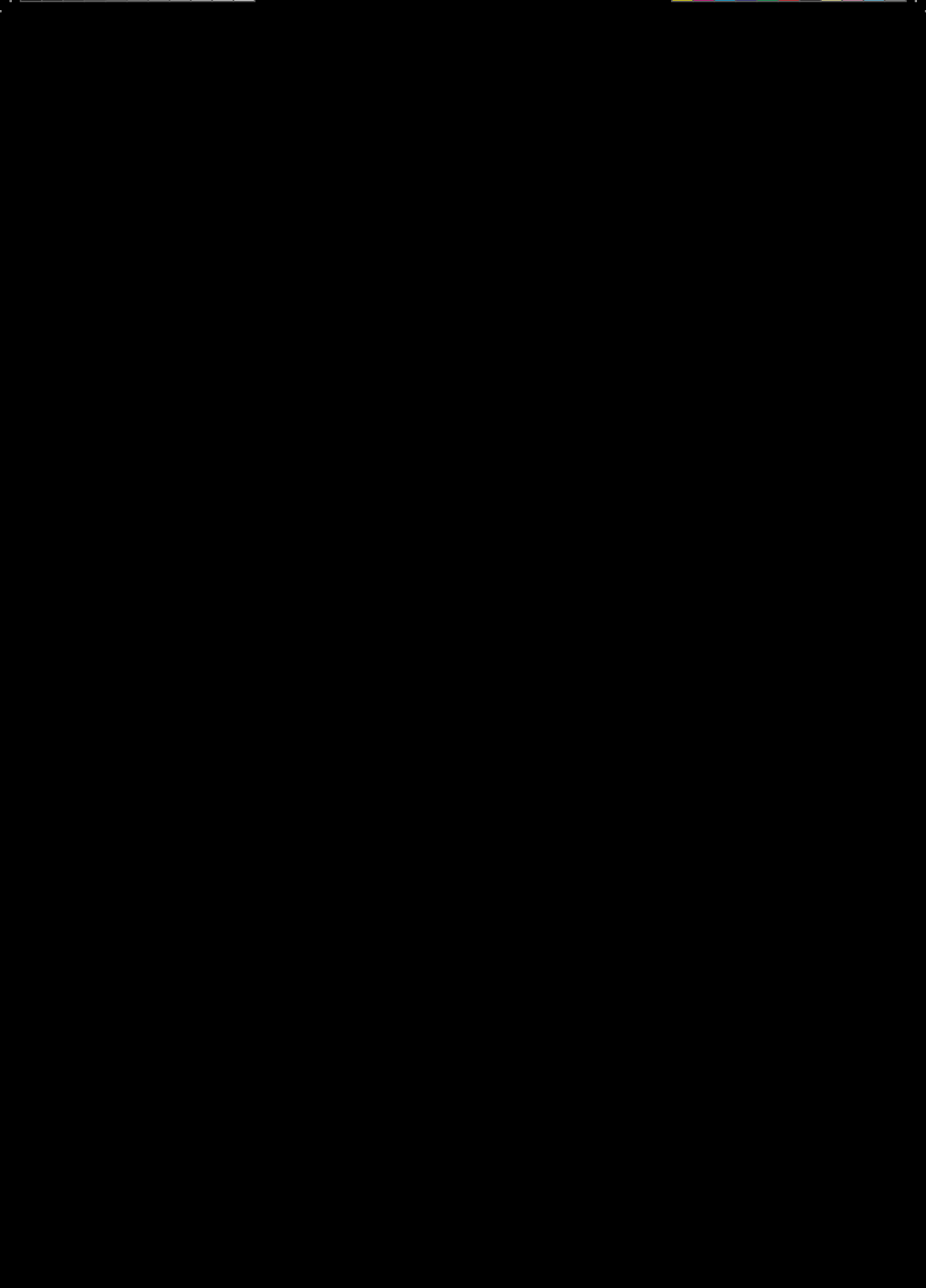
A NEW BIKE. IN UNDER 60 SECONDS

The Tomahawk® Cyclewell Rack minimizes storage whilst offering fast access to and a safe ergonomic lifting position for equipment



AN INCLUSIVE FITNESS INITIATIVE. POWERED BY EDUCATION

The Tomahawk® Cyclewell equipment has been designed for use with the accredited and free I.C.E® Cyclewell education course





TEAM ICG®

-  [FACEBOOK.COM/TEAMICG](https://www.facebook.com/teamicg)
-  [TWITTER.COM/TEAMICG](https://twitter.com/teamicg)
-  [YOUTUBE.COM/TEAMICG](https://www.youtube.com/teamicg)
-  [WWW.TEAMICG.COM](http://www.teamicg.com)



EMAIL: INFO@INDOORCYCLING.COM
WEBSITE: WWW.INDOORCYCLING.COM

© 2012 Indoorcycling Group®. Technical and optical changes in the product range may occur.